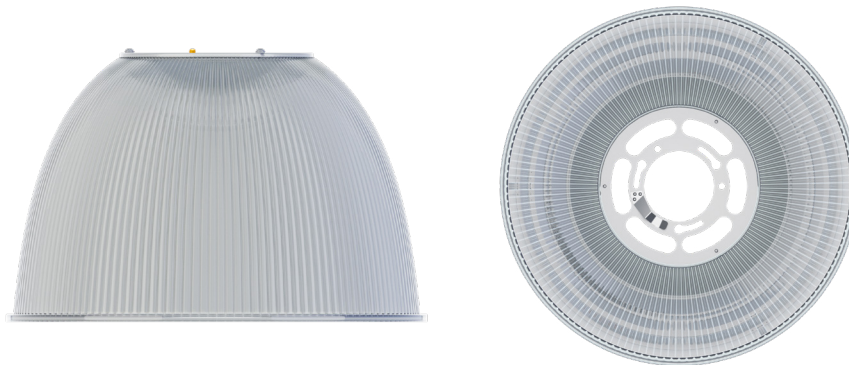


Date	Project	Part #
------	---------	--------



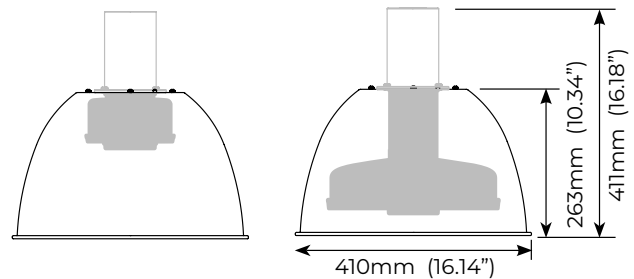
Features

The optional reflector is available to create a traditional high-bay aesthetic. However, these reflectors are not needed and its installation does not substantially alter the light distribution. The Filamento lamp has integral optics that create a cutoff at 50°, eliminating glare so an external reflector is not required.

- Solid polycarbonate reflector
- Reflectors are vented to allow for airflow
- Compatible with all ADP mounting bases
- Compatible with all mogul base lamps
- Easy to install - Simply twist and lock assembly to ADP mounting bases, no tools required
- Optional diffuser, drop lens, wireguard accessories
- ADP mounting bases are sold separately
- See website for Installation Guide

Mechanical

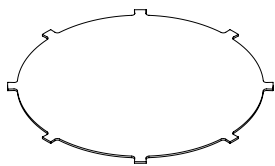
- 1.09 kg / 2.4 lb
- Solid polycarbonate body



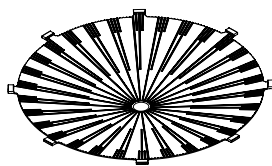
16" Reflector shown with VA6 Lamp

16" Reflector shown with V2x Lamp

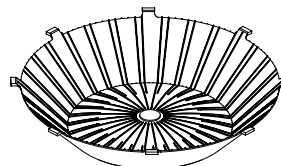
Compatible Accessories



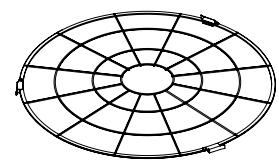
16" UGR Diffuser
ACC-016-UGR-000-FL



16" Conical Lens
ACC-016-CNL-000-FL



16" Drop Lens
ACC-016-DRL-000-FL



16" Wireguard Black
ACC-016-WBK-000-FL

Ordering Information

Description	Part Code	Part #
Prismatic Polycarbonate 16" Reflector	03014	RFL-PR16-CL1PC1

1. Inquire for custom color combinations
2. [See limited warranty for details](#)
3. Specifications subject to change without notice

4. Not intended for use in environments containing airborne corrosive agents such as chemicals, solvents, or cutting fluids