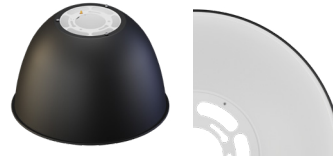


Date                      Project                      Part #

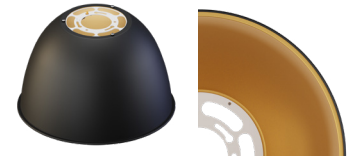


Gray Exterior/White Interior

### Standard Finish Options



Black Exterior/White Interior



Black Exterior/Gold Interior

\* Inquire for custom finish

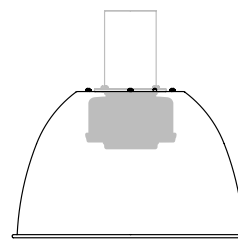
### Features

The optional reflector is available to create a traditional high-bay aesthetic. However, these reflectors are not needed and its installation does not substantially alter the light distribution. The Filamento lamp has integral optics that create a cutoff at 50°, eliminating glare so an external reflector is not required.

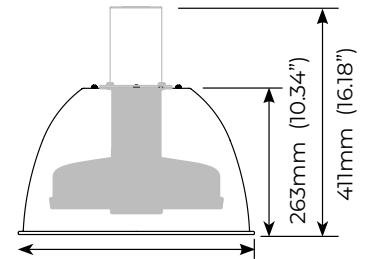
- Solid aluminum reflector
- Reflectors are vented to allow for airflow
- Compatible with all ADP mounting bases
- Compatible with all VA6 mogul base lamps
- Easy to install - Simply twist and lock assembly to ADP mounting bases, no tools required
- Optional diffuser, drop lens, wireguard accessories
- ADP mounting bases are sold separately
- See website for Installation Guide

### Mechanical

- 1.0 kg / 2.2 lb
- Solid aluminum body
- Inquire for custom colors

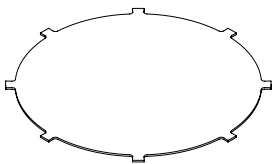


16" Reflector shown with VA6 Lamp

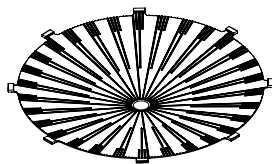


16" Reflector shown with V2L/V2M Lamp

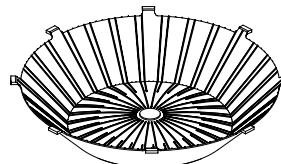
### Compatible Accessories



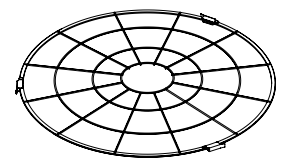
16" UGR Diffuser  
ACC-016-UGR-000-FL



16" Conical Lens  
ACC-016-CNL-000-FL



16" Drop Lens  
ACC-016-DRL-000-FL



16" Wireguard Black  
ACC-016-WBK-000-FL

### Ordering Information

Description	Part Code	Part #
Aluminum Bell 16" Reflector - Gray Exterior/White Interior	03889	RFL-AB16-GR2WH2
Aluminum Bell 16" Reflector - Black Exterior/Gold Interior	03894	RFL-AB16-BK2GD2
Aluminum Bell 16" Reflector - Black Exterior/White Interior	03926	RFL-AB16-BK2WH2

1. Inquire for custom color combinations
2. [See limited warranty for details](#)
3. Specifications subject to change without notice

4. Not intended for use in environments containing airborne corrosive agents such as chemicals, solvents, or cutting fluids